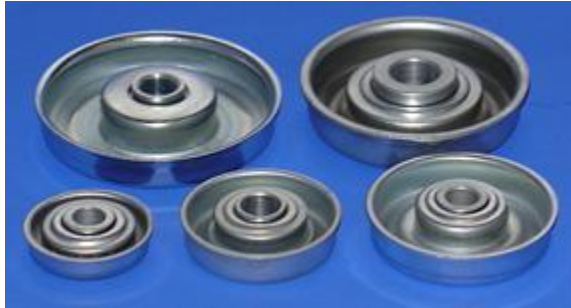


Full Complement Flanged Roller End Bearings

Inner and outer raceways are made from case hardened steel.

Standard finish is Zinc Plate.

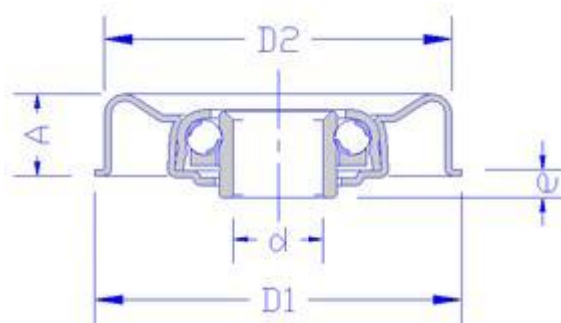


Heavy duty bearings are normally prefixed with "H" and greased as standard.

Light duty bearings are normally oiled as standard.

Heavy duty bearings are protected from particle ingress by the inclusion of a felt seal.

Flanged bearings are designed to be swaged into EWR tube.



Part Number	D1	D2	d dia	d hex	A	e	Tube Size	Dynamic Load (kgs)
3GF418Z	0.980"	0.900"	1/4"	-	3/8"	0.125"	1" x 18 SWG	5
3GF618Z	1.455"	1.390"	3/8" : 7/16"	8mm : 11mm	1/2"	0.156"	1 1/2" x 18 SWG	12
3GF916Z	2.222"	2.100"	7/16"	11mm	1/2"	0.187"	2 1/4" x 18 SWG	20
GF3518Z	1.362"	1.264"	8mm	8mm	8.5mm	0.197"	35mm x 1.5mm	14

GF3519Z	1.362"	1.283"	8mm	8mm	8.8mm	0.197"	35mm x 1.0mm	14
GF35FC	36.95	35.20	8mm : 10mm 12mm 7/16"	8mm : 11mm	10.00mm	3.50mm	1 1/2" x 16/18 SWG	50
GF37FC	39.80	37.20	8mm : 10mm 12mm 7/16"	8mm : 11mm	10.00mm	3.70mm	40mm x 1.5mm	50
GF46FC	49.30	46.30	8mm : 10mm 12mm 7/16"	8mm : 11mm	11.00mm	3.70mm	50mm x 2.0mm	50
GF47FC	49.80	47.20	8mm : 10mm 12mm 7/16"	8mm : 11mm	11.00mm	3.70mm	50mm x 1.50mm	50
GF52FC	54.90	52.90	8mm : 10mm 12mm 7/16"	8mm : 11mm	12.00mm	3.70mm	2 1/4" x 14 SWG	50
GF56FC	59.20	56.10	8mm : 10mm 12mm 7/16"	8mm : 11mm	12.70mm	3.70mm	60mm x 2.00mm	50
GF57FC	59.40	57.30	8mm : 10mm 12mm 7/16"	8mm : 11mm	12.70mm	3.70mm	60mm x 1.50mm	50

GF76FC	79.50	76.30	8mm : 10mm 12mm 7/16"	8mm : 11mm	13.70mm	3.70mm	80mm x 2.00mm	50
HGF616Z	1.455"	1.370"	7/16"	11mm	9/16"	0.156"	1 1/2" x 16 SWG	30
HGF912Z	2.150"	2.010"	7/16" : 5/8"	-	3/4"	0.218"	2 1/4" x 16 SWG	80
HGF912LZ	2.150"	2.050"	7/16" :1/2" : 5/8"	-	3/4"	0.250"	2 1/4" x 14 SWG	80