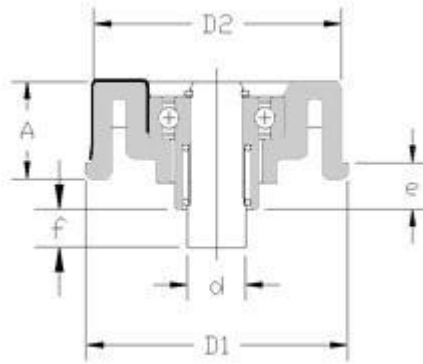


## Integral Spring Loaded Axle Conveyor Roller End Bearings

New to the Conveyor Bearings Limited range of products come our Integral Spring Loaded Axle Conveyor Roller End Bearings. These are available with either steel or plastic flanged outer cases, a choice of either precision bearings for powered systems or our own design plastic caged "PC" bearings for gravity systems and combined with a choice of 8mm or 12mm axle extensions, there is sure to be one to suit your requirements.



Part Number	D1	D2	d dia	d hex	A	e	f	Tube Size	Dynamic Load (kgs)	Precision Bearing
<b>CSL47</b>	39.00	37.00	8mm :10mm : 12mm	11mm	11.50	11.50	8mm : 12mm	50 x 1.5	25	6000-2RS
<b>GFP47ST</b>	48.80	46.20	8mm :10mm : 12mm	11mm	11.50	11.50	8mm : 12mm	50 x 1.5	25	6000-2RS
<b>GF47PC-EXT</b>	49.50	47.30	3/8"	-	11.70	5.70	12mm	50 x 1.5	25	N/A

**CSL47** has a special high strength yellow nylon housing into which a extended precision bearing and intergral spring loaded axle is fitted.

**GFP47ST** has a plated steel outer case into which a extended precision bearing and intergral spring loaded axle is fitted.

**GF47PC-EXT** has a plated steel outer case with a extended spindle running in a plastic caged sub-assembly.

