

Machined Roller End Bearings



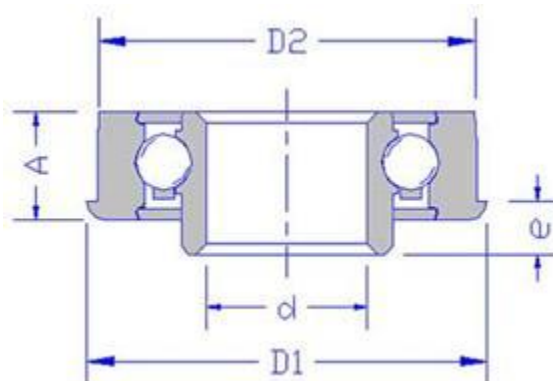
These bearings are suitable for powered applications and are constructed using fully machined raceways made from case hardened steels, incorporating an acetal cage.

They are supplied greased as standard.

Standard finish: Natural.

Suffix part number with Z, if plating is required.

Suffix * These Bearings also have a rubber seal.



Part Number	D2	D1	d dia	d hex	e	A	Tube Size	Dynamic Load (kgs)
GFM37-11MH*	1.454"	1.552"	-	11mm	0.295"	0.580"	40 x 1.6mm	110
GFM41-11MH*	1.618"	1.665"	-	11mm	0.295"	0.580"	-	119
GFM910-17MH*	1.999"	2.118"	-	17mm	0.295"	0.600"	2 1/4 x 10 SWG	280
GFM916-17MH*	2.138"	2.250"	-	17mm	0.295"	0.600"	2 3/8 x 11 SWG	300

Twin Track Chain Conveyor Bearings



These bearings are assembled with a deep grooved radial precision bearing and have been designed for powered driven roller applications where very low noise levels are desirable. The inclusion of a second row of balls greatly increases the load rating and reduces the axial play of the bearing.